



Volvo S60
(2008-2009)



Wiring Diagrams and Electric Model Year 2009



VOLVO S60

WIRING DIAGRAM 2009



TP 39130202

Table of Contents 1:2

Vehicles with SRS (Airbag)/SIPS bag/IC (Inflatable curtain).....	2
Abbreviations.....	5
How to use the wiring diagrams 1:2.....	6

Overview

Electrical distribution 1:2.....	8
----------------------------------	---

Fuses

Engine compartment 11A/1-5.....	10
Engine compartment 11B/1-12.....	11
Engine compartment 11B/13-15.....	12
Engine compartment 11B/16-20.....	13
Passenger compartment 11C/1-6.....	14
Passenger compartment 11C/7-13.....	15
Fuses in passenger compartment 11O/1-2.....	16
Cargo compartment 11E.....	17
Cargo compartment 11L.....	18
Central Electronic Module (CEM) F1-F15.....	19
Central Electronic Module (CEM) F16-F34.....	20
Rear Electronic Module (REM) F1-F13.....	21
Rear Electronic Module (REM) F17-F38.....	22

Relays

Ignition switch and relays.....	23
Engine compartment FMA1 - FST3.....	24
Other relays.....	25

Ground connections

Overview.....	26
31/1 - 31/44.....	27
31/46 - 31/67.....	28
31/70 - 31/73.....	29
31/83 - 31/88.....	30
31/89 - 31/93.....	31
31/94 - 31/102.....	32
31/120.....	33

Control modules

Overview of locations.....	34
Overview of designations.....	35
Central Electronic Module (CEM) 1:2.....	36
Rear Electronic Module (REM) 1:2.....	38
High speed CAN data communication.....	40
Low speed CAN data communication.....	41
LIN data communication 1:2.....	42

Group 23 Fuel system

Engine management system, 5-Cyl. 1:2.....	44
Engine management system, 5-Cyl. Turbo 1:2.....	46
Engine management system, Bi-Fuel 1:2.....	48

Engine management system, 5-Cyl. Diesel 1:3.....	50
Emission control, 5-Cyl.....	53
Emission control, 5-Cyl. Turbo.....	54

Group 26 Cooling system

Cooling fan.....	55
Cooling fan, Diesel.....	56

Group 27 Engine controls

Cruise control.....	57
Cruise control, Diesel.....	58

Group 32 Alternator and voltage regulator

Power supply.....	59
-------------------	----

Group 33 Starting system

Starting system.....	60
----------------------	----

Group 35 Lighting

High and low beam (Bi-Xenon) & Day running lights...	61
Active headlights (ABL).....	62
Fog lights.....	63
Brake lights.....	64
Reversing lights.....	65
Running/parking light, tail lights & license plate lighting...	66
Follow-me-home lighting.....	67
Interior lighting.....	68
Beam length adjustment.....	69
Auxiliary lights.....	70

Group 36 Additional electrical equipment

Rain sensor.....	71
Direction indicators and hazard warning flashers.....	72
Wiper/washer, windshield.....	73
Wiper/washer, headlights.....	74
High pressure headlight washer.....	75
Horn.....	76
Electronic immobilizer.....	77
Anti-theft alarm.....	78
Parking assistance.....	79
Accessory Electronic Module (AEM) 1:2.....	80
Alcolock.....	82

Group 37 Wiring and fuses

Diagnostics system.....	83
12V outlet.....	84
12V outlet, cargo compartment.....	85
Tow hitch cable harness, 4-pin.....	86
Tow hitch cable harness, 7-pin.....	87
Tow hitch cable harness, 13-pin.....	88

Table of Contents 2:2

Group 38 Instruments

Seat belt reminder	89
Driver information module.....	90
Driver information module, Diesel.....	91
Driver information module, Bi-Fuel	92

Group 39 Other

Audio with internal amplifier.....	93
Audio with external amplifier 1:2.....	94
Mobile phone	96
Road Traffic Information (RTI).....	97
Road Traffic Information (RTI) & CD changer	98
Navigation system, portable	99
CD changer.....	100
MP3 player.....	101
Satellite radio	102
Bluetooth handsfree.....	103

Group 43 Transmission

Automatic transmission AW55-51SN/AW51 AWD	106
Automatic transmission TF-80SC/ TF-80SC AWD, Diesel.....	107
Geartronic AW55-51SN/AW51 AWD.....	108
Shift lock AW51 & Manual	109
Differential Electronic Module (DEM).....	110

Group 59 Brake system

Brake Control Module (BCM).....	111
---------------------------------	-----

Group 64 Steering

Electronic power steering	112
---------------------------------	-----

Group 76 Shock absorbers

Four-C.....	113
-------------	-----

Group 83 Doors and openings

Central locking.....	114
Power windows.....	115
Power sunroof.....	116

Group 84 Exterior decorative elements etc.

Power door mirrors	117
Heated door mirrors.....	118
Heated rear window.....	119
Blind spot information system.....	120

Group 85 Interior equipment

Power driver s seat	121
Power passenger seat	122
Heated seats.....	123

Group 87 Climate control system, Accessories

Relay, electric engine heater	124
Climate control system 1:2.....	125
Climate control system, Diesel 1:2	127
Parking heater, auxiliary heater	129
Parking heater, remote start	130
Parking heater, Call start	131
Short stop heater	132

Group 88 Internal equipment

Supplemental Restraint System (SRS).....	133
Electrically adjustable head restraint	134
Remote garage door opener	135

Connectors..... 136

Branching points 154

Cable harness routing in vehicle

Engine harness, Gasoline.....	163
Engine harness, Diesel.....	164
Engine compartment harness LHD.....	165
Engine compartment harness RHD	166
Passenger compartment harness LHD.....	167
Passenger compartment harness RHD	168
Cargo compartment harness	169
Roof harness	170
Trunk/tailgate harness	171
Door harness	172
Harnesses Bi-Fuel	173

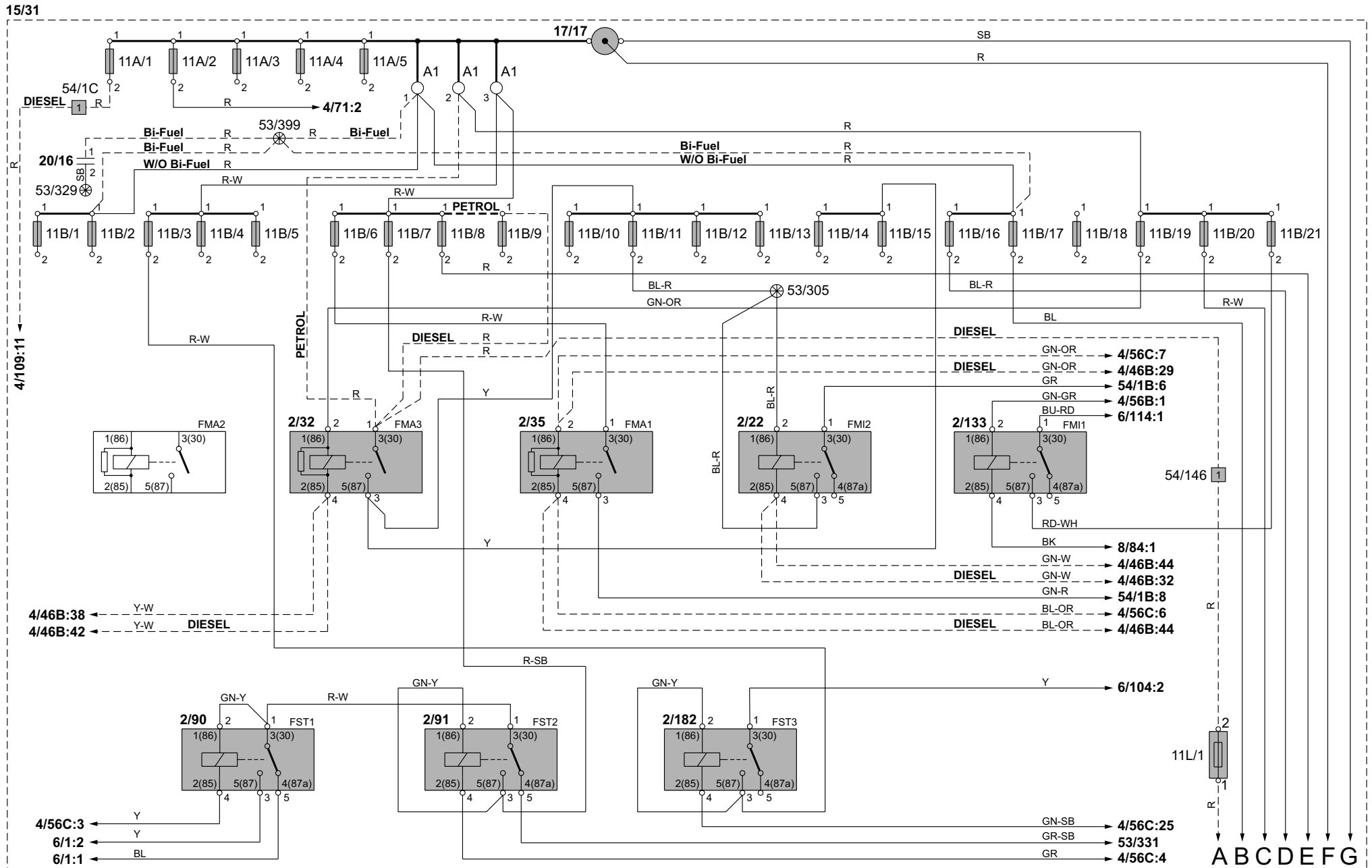
Component pictures..... 174

Index 1:2..... 220

List of components 1:4 222

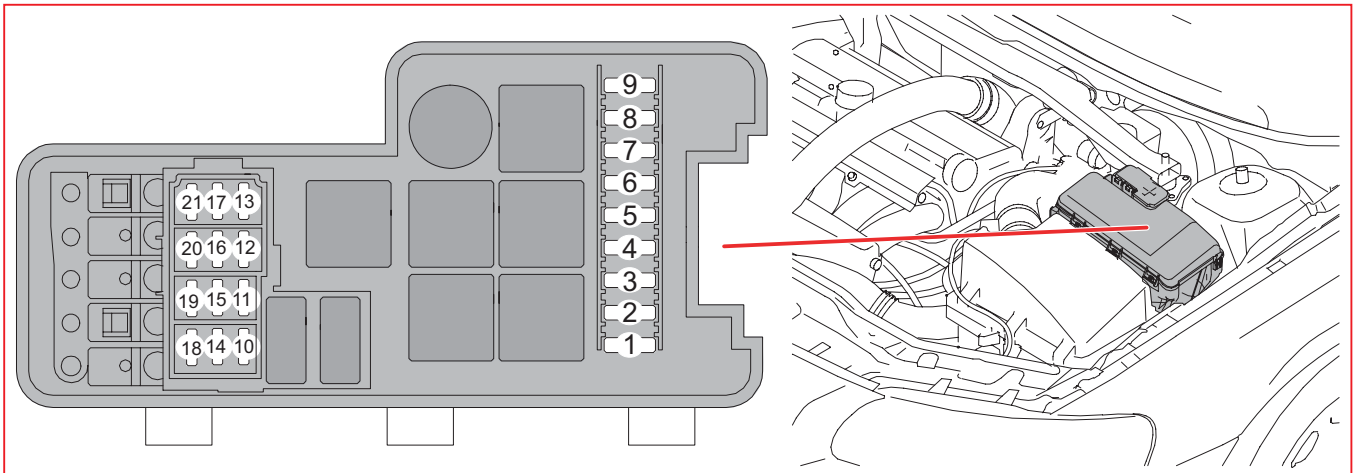
Overview

Electrical distribution 1:2



Fuses

Engine compartment 11B/13-15



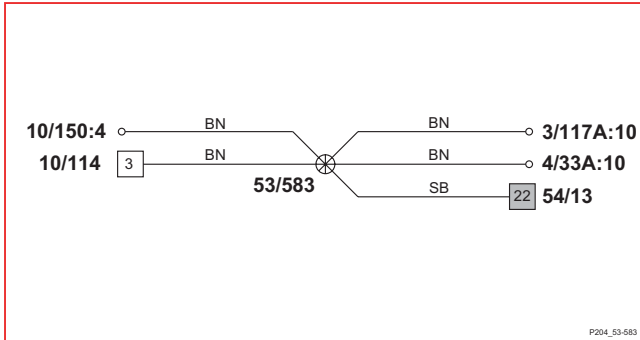
11B Fuses in the engine compartment

No.	Fuse function	via	A	
13	4/46 Engine Control Module (ECM), 5-Cyl. not turbo	-	10	
	4/50 Electronic Throttle Module (ETM), Bi-Fuel	-		
	6/120 Throttle body motor, 5-Cyl. not turbo	4/46		
	13	4/46 Engine Control Module (ECM), Diesel	-	15
		6/118 Control motor, swirl throttle, Diesel	4/46	
		6/120 Throttle body motor, Diesel	4/46	
		8/98 Fuel pressure control valve, Diesel	4/46	
		8/111 Fuel flow control valve	4/46	
14	7/15 Front heated oxygen sensor, Diesel	-	10	
	4/46 Engine Control Module (ECM), Bi-Fuel	-	20	
	7/15 Front heated oxygen sensor	-		
	7/82 Rear heated oxygen sensor	-		
15	6/67 Pump, fuel leakage control	-	10	
	6/105 Fuel distributor gas, Bi-Fuel	-		
	8/18 EVAP valve	-		
	8/19 Solenoid, variable valve timing intake	-		
	8/28 Turbo control valve	-		
	8/75 Valve, fuel cut-off DFCO	-		
	8/81 Solenoid, variable valve timing exhaust	-		
	9/32 PTC resistor, crankcase ventilation	-		
	15	4/109 Glow plug control unit (GCU)	-	15
		6/143 Turbo control motor, Diesel	-	
		8/64 Solenoid valve, engine pad	-	
		8/113 Bypass valve, EGR cooling, Diesel	-	
		8/120 EGR valve, Diesel	-	
continues				

Branching points

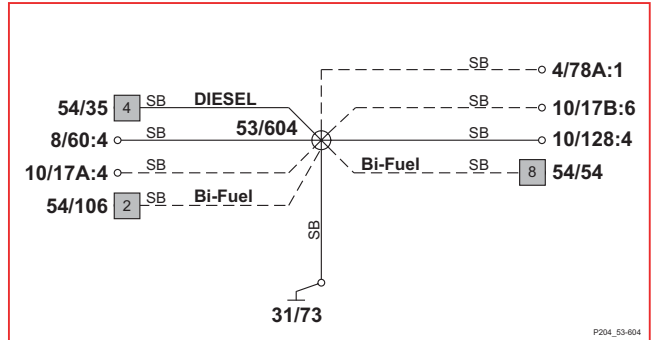
53/583 - 53/734

53/583



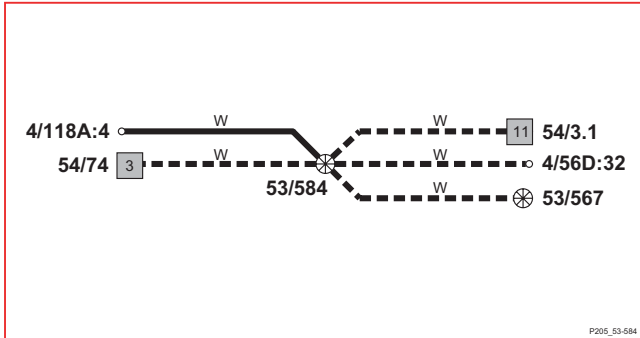
P204_53-583

53/604



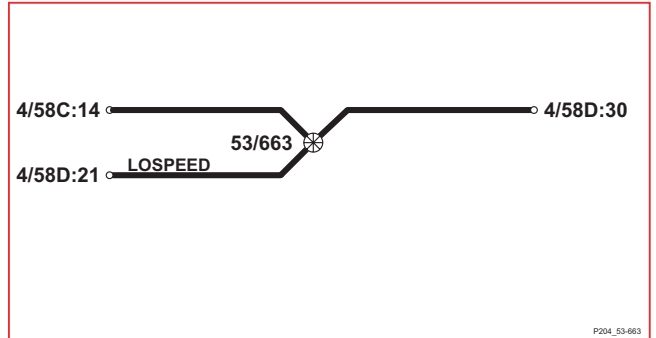
P204_53-604

53/584



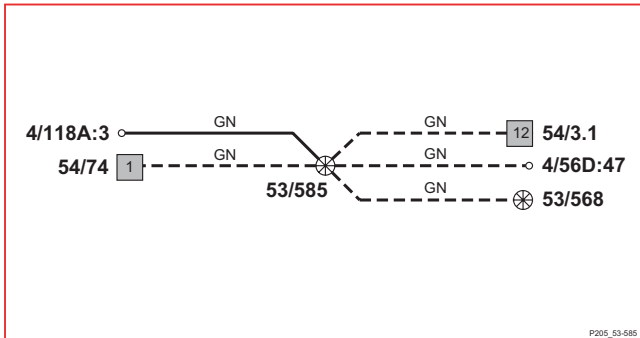
P205_53-584

53/663



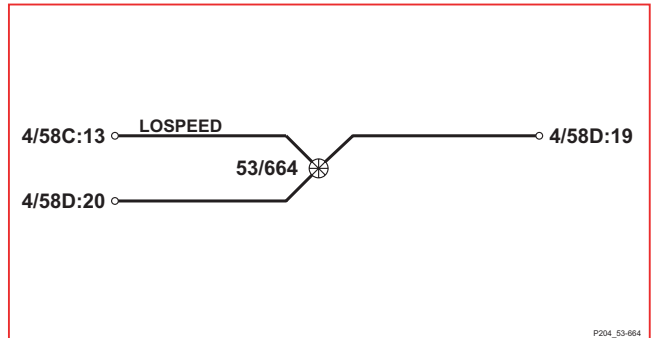
P204_53-663

53/585



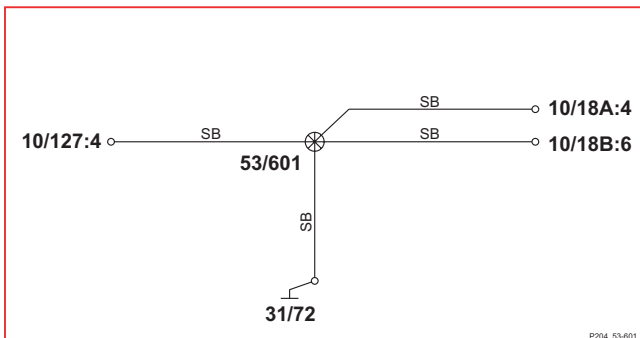
P205_53-585

53/664



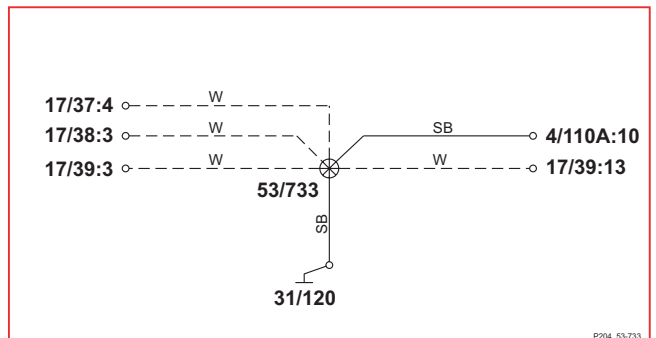
P204_53-664

53/601



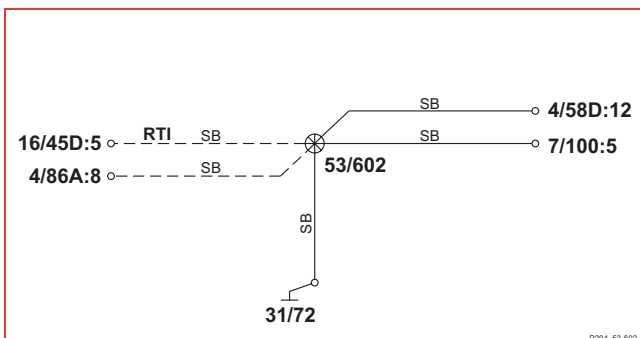
P204_53-601

53/733



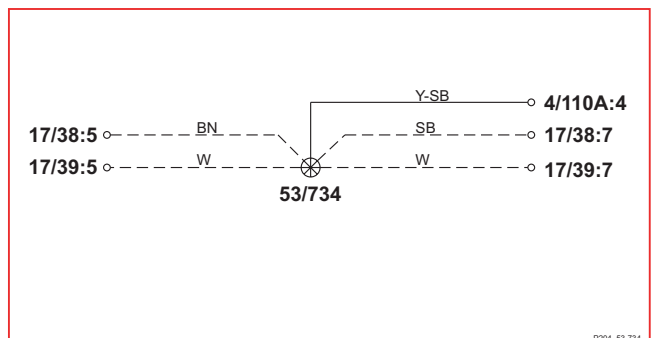
P204_53-733

53/602



P204_53-602

53/734



P204_53-734

Cable harness routing in vehicle

Engine harness, Gasoline

